



5  
YEAR

# SUPPLIES FOR DREAMS



Annual Report 2013

# TABLE OF CONTENTS

- 
- The background of the page is a dark, textured surface, likely a desk. Scattered across the desk are several white flashcards with black text. Some cards show simple multiplication problems like '4 x 5', '6 x 8', and '11 x 3'. Other cards show larger numbers like '20', '17', and '8'. A silver pen lies on the left side of the desk. The overall aesthetic is clean and educational.
- 03 **Letter from the Executive Director**
  - 04 **5 Years in the Making**
  - 06 **Dream Drive**
  - 08 **Award-a-Field Trip**
  - 10 **Academic Enrichment**
  - 12 **Meet the Team**
  - 13 **Associates Board/Board of Directors**
  - 14 **What's Coming Up**
  - 16 **Gift Showcase**
  - 17 **Financials**

# LETTER FROM THE EXECUTIVE DIRECTOR



Nicole Bronnimann, Executive Director

“

The children we work with brighten our days with their eagerness to learn, their resilience, and their many unique personalities. They are the future of Chicago, and knowing them, this makes us very hopeful indeed.

**Dear Friends,**

It is hard to believe that it was only five years ago that Supplies for Dreams was founded. From our beginning and continuing to the present, we have had the honor to serve the students of Chicago Public Schools (CPS) with quality resources and programming. 2013 was another momentous year in the CPS district, which again received national news coverage, this time for its school closure initiative. Forty-nine elementary schools were closed as a part of this action, and students at closed schools were consolidated to other schools in the district. The Board of Education also introduced a comprehensive new accountability system for all CPS schools, including charters, which is based on performance metrics as well as teacher feedback.

It was a momentous year for our organization as well. This year, we served more than 3,200 Chicago Public Schools students, and in the summer, we added our fourth partner school, Friedrich Jahn Elementary, which joins Manuel Perez Jr. Elementary, Belmont-Cragin Elementary, and Bernhard Moos Elementary. Through Dream Drive, we provided all of our students with backpacks and school supplies. Through Award-a-Field-Trip, we led every 4th through 8th grade classroom on field trips to the Field Museum, Museum of Science and Industry, and the Chicago History Museum. Finally, through Academic Enrichment, we provided middle-schoolers at our partner schools with mentoring programs and college visits.

In our fifth year of operation, we also passed a threshold and began to receive public recognition for our past and continuing achievements. We received the Honorable Mention for Excellent Emerging Organization Award from the Axelson Non-Profit Center and were accepted into the Springboard Foundation family, which provides funding and professional development for promising young organizations. This support inspires us with hope that we will be able to continue serving the children of Chicago for years to come.

It is because of the support of our donors and volunteers that we are able to make a difference in our students' lives. For what you have given and for your continued support, thank you.

The children we work with brighten our days with their eagerness to learn, their resilience, and their many unique personalities. They are the future of Chicago, and knowing them, this makes us very hopeful indeed.

Warm Regards,  
**Nicole Bronnimann**



**5 YEARS IN THE MAKING**

2008-2013

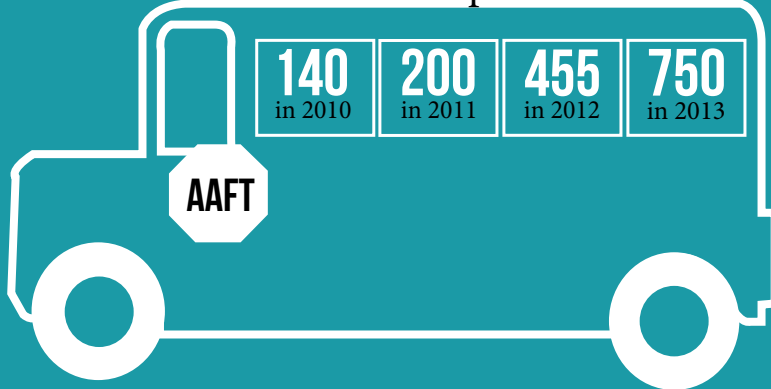
From a team of

# 2 TO 44



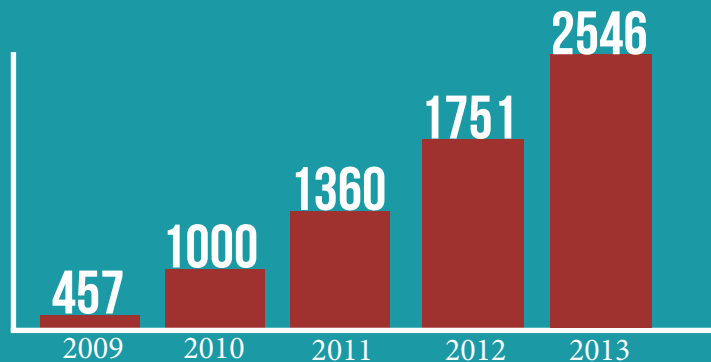
Von Humboldt Elementary, first official partner school in 2009

Award-A-Field Trip: students served



# 324 hours mentored

Dream Drive: students served



It started at a kitchen table. Hiro Kawashima and Aria Fiat, students in the Chicago suburbs, recognized the incredible disparity between the quality of their own public education and that of Chicago Public Schools, mere miles away from their hometown. CPS is the third-largest school district in the nation: Eighty-seven percent come from low-income families, and 94 percent will not obtain a college degree. Hiro and Aria recognized that young people need a strong education to achieve their full potential, so they took action.

With the ideal that all students, regardless of socio-economic background, deserve a chance to thrive in a challenging, supportive educational environment, Hiro and Aria founded Supplies for Dreams. During five successful years of operation, SFD has positioned itself to support low-income CPS students with both physical resources and extracurricular opportunities—a holistic model that maximizes the effect of its programs.

# DREAM DRIVE



**2,546**  
**STUDENTS SERVED**

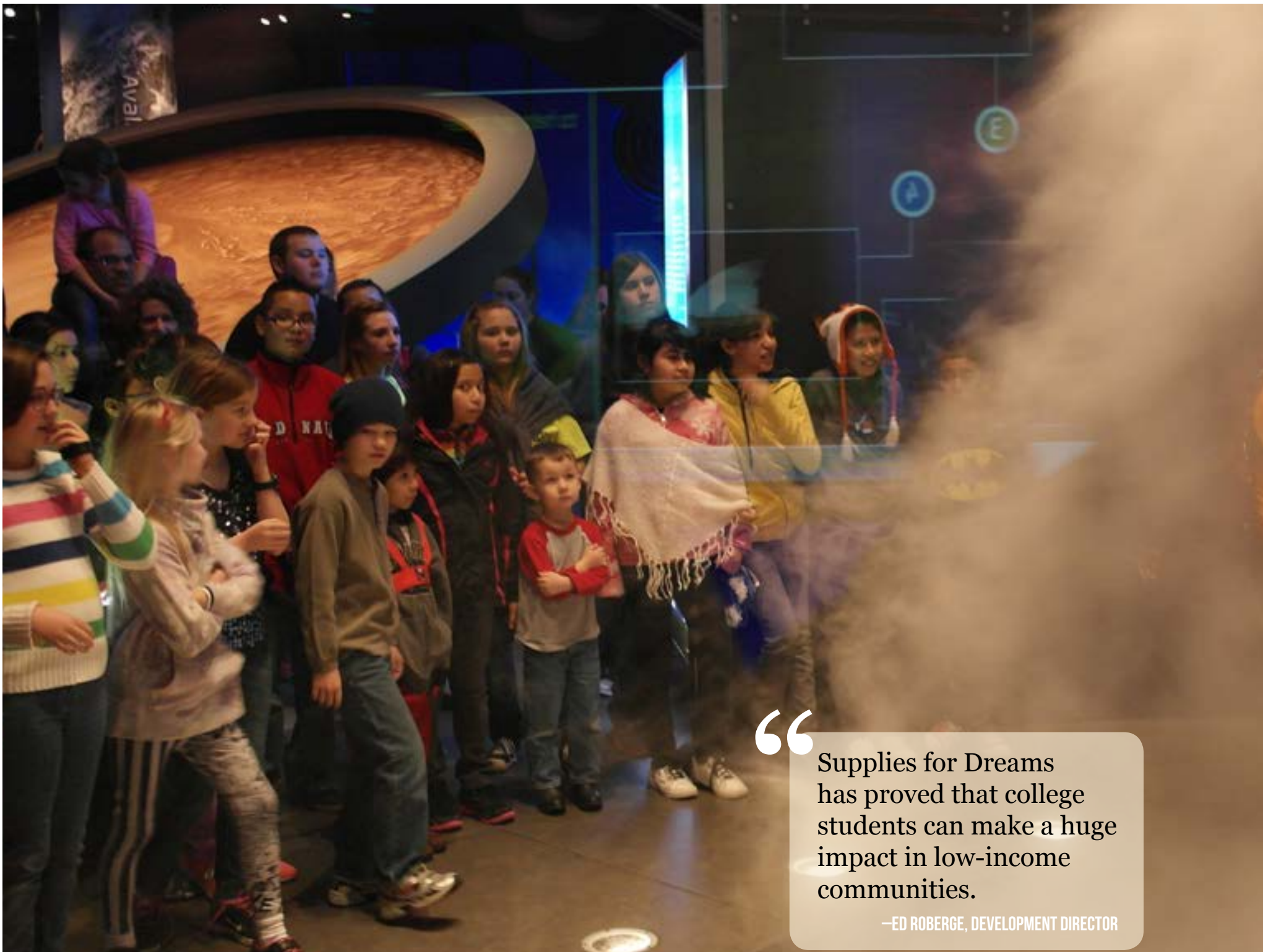
Dream Drive, Supplies for Dreams' flagship program, continues to grow with our organization. This year more than 2,500 students received school supplies due to the generous contributions of individuals, corporations, and foundations. Dream Drive culminated in the 4th Annual Build-a-Backpack Day, a summer celebration and community event where more than 200 volunteers of all ages packaged backpacks, mingled, and played games. With each year, more students receive school supplies and even more volunteers help assemble the backpacks, supply packages, and classroom kits.





“ I think a quality education should not be a privilege but something that everyone has access to.

—ALISON KORANSKY, MENTORING COORDINATOR



“

Supplies for Dreams has proved that college students can make a huge impact in low-income communities.

—ED ROBERGE, DEVELOPMENT DIRECTOR



# AWARD-A-FIELD TRIP

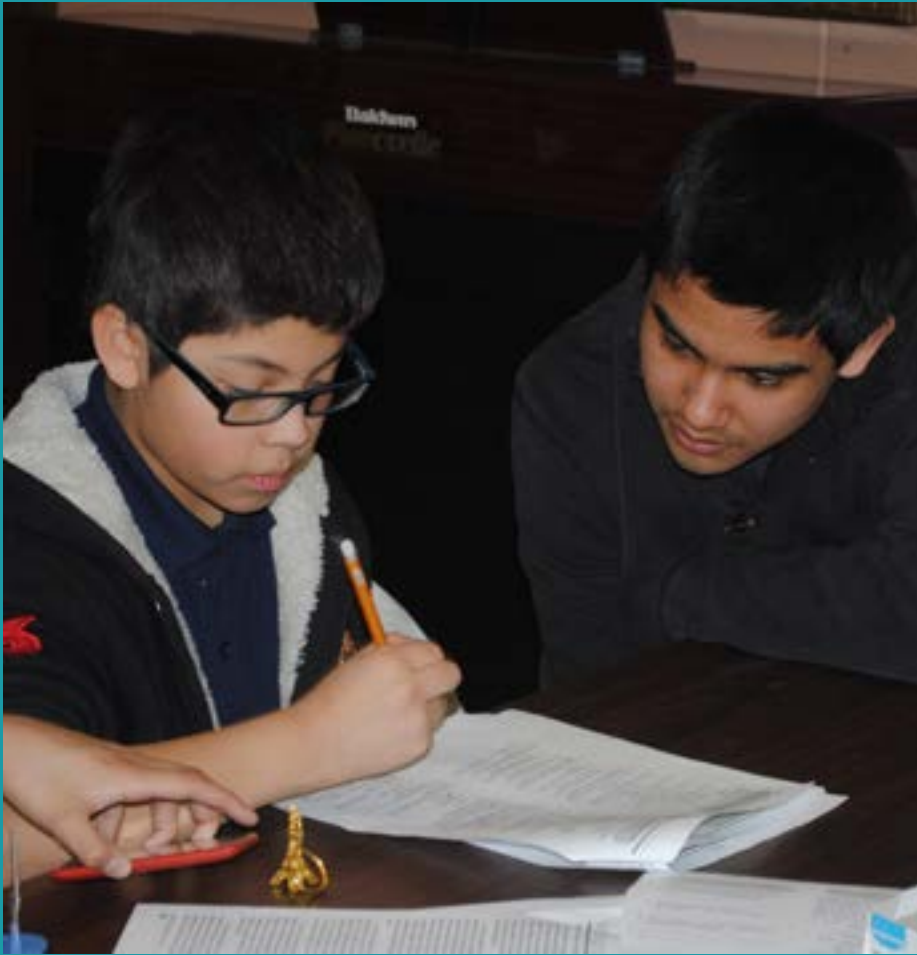


**750**  
**STUDENTS SERVED**



This year Award-a-Field Trip led more than 600 students on tours of world-renowned museums in Chicago, including the Museum of Science and Industry, the Field Museum, and the Chicago History Museum. These trips provide an out-of-the-classroom experience for students that sparks their curiosity and gets them excited about learning. The AAFT team creates specific curricula based on the themes of each museum, placing an emphasis on the mission-based experience that will give the students a purpose as they are exploring the museum. AAFT shows students that learning can be exciting and hands-on, which, in turn, will encourage students to stay in school and find a meaningful career path with a successful future.

# ACADEMIC ENRICHMENT



Academic Enrichment offers mentoring opportunities at our four partner schools: Manuel Perez Jr. Elementary School, Belmont-Cragin Elementary School, Bernhard Moos Elementary School and Friedrich Ludwig Jahn Elementary School. SFD offers our schools both in-person and e-mentoring programs to guide and inspire students to reach new educational goals and aspirations. This year, we shifted our focus from tutoring to character development. Our mentors now focus on developing sociobehavioral skills in their students with project-based, student-directed learning.

32

**STUDENTS SERVED**





“

I look up to the college students because they are both successful and caring and that's what I want to be like.

-DAVID, SIXTH GRADER



# MEET THE TEAM

NICOLE BRÖNNIMANN GABRIELLE BUDZON NINA MARSHALL MICHAEL LIBBY KAILA ZOGHEB SERENE YU JONATHAN LI JOSEPH RAFF SCOTT BROWN  
NATHAN SHIFERAW ED ROBERGE BRENNIA LEDVORA MITCH VON HOFFMANN CHRISTINA ZHANG IRENA ZHENG KENNY MOK MELISSA HANIFF  
NATHAN WANG SAM YI KEVIN ROSENTHAL ALI SZEMANSKI ALIANA PIATT CHARLES LUCKE DAVID FORBES CLAIRE GOODRICH SAM WYLDE ELYSE SAMUELS  
JACKIE MARTHOUSE REID TITLE SCOTT CLENDENING STEPHANIE KELLY SHOSHANA SHAPIRO MARIE DONALDSON THERESE KALTENECKER  
HANNAH JONES ANTONIOS VARELAS RAFA IFTHIKHAR CARLY PABLOS ZACHARY SILVA AMY WECKER ALISON KORANSKY AJIT AUGUSTIN AVANI SINGH

# AND THE BOARDS

The Associates Board and Board of Directors are composed of young professionals who act as advisors and mentors for the current leadership and team members. They use their resources, experience and insight to continue improving and expanding knowledge of SFD in order to strive for excellence and higher quality programming.



**HIRO KAWASHIMA**  
President & Co-Founder,  
Board of Directors



**ARIA FIAT**  
Co-Founder, Board of  
Directors



**BRIAN BOHL**  
Treasurer, Board of Directors  
Associates Board



**BETTINA CHANG**  
Secretary, Board of Directors  
President, Associates Board



**VANESSA LEE**  
Board of Directors  
Associates Board



**J.D. BRYANT**  
Associates Board



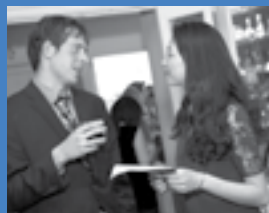
**MICHELLE ZHANG**  
Associates Board



**AMIT BHATT**  
Associates Board



**CASSIE MORAN**  
Associates Board



Supplies for Dreams is run by a team of dedicated, passionate volunteer individuals who dedicate upwards of 20 hours a week to the cause. College students and young professionals work together every day to refine, strive towards, and achieve the lofty goals set forth by our founders. The organization is dedicated to recruiting, retaining, and developing a hardworking and diverse team that will ensure our sustainability and success in the future.





# LOOKING PAST OUR 5<sup>TH</sup> YEAR

40

12  
11  
13

8  
6

15. 9  
4

10  
7

20. 11  
6

26. 12  
11

32. 9  
8

37. 6  
6

38. 7  
5

44. 11  
5

21. 10  
7

27. 7  
4

33. 12  
8

39. 4  
2

45. 11  
8

# AWARD-A-FIELD TRIP



Award-a-Field Trip is developing a curriculum for a new destination, Chicago's renowned Adler Planetarium. Students will get a chance to learn about the solar system and universe through a new adventure-based curriculum, which guides them through a "mission" that weaves through the exhibits. Each student can choose to be an astronaut, engineer, scientist, or teacher within the context of an exciting, goal-based project. For example, students will work to find a new planet to live on while at the Adler Planetarium. This format, which will be incorporated in each museum curriculum, engages students on a different level that cannot be achieved in the classroom.

# NU CHAPTER

The Northwestern University Chapter of SFD will continue to bring CPS students to campus and engage the Northwestern community in SFD's mission. Through guest lectures, movie screenings, fundraisers, and field trips to Northwestern, the Chapter strives to teach students about the possibilities for their future and motivate them to reach their highest academic potential.



# ACADEMIC ENRICHMENT

Academic Enrichment will be holding workshops at each of our four partner schools toward the end of the 2013-2014 school year. Northwestern University student groups will lead these workshops on the fundamentals of community development and service, culminating in a service project coordinated by the students themselves. The team is also adjusting our programs to combine levels of technology and education to create an impactful and efficient mentoring experience. Our improved curriculum will focus on building specific characteristics that have been proven to lead to academic success.



# GIFT SHOWCASE & FINANCIALS

## **\$5,000 OR MORE**

Flowers for Dreams  
Paul and Pearl Caslow Foundation  
Springboard Foundation  
Ronald H Ringer Foundation  
Daniel F + Ada L Rice Foundation  
Mark Morton Mutual Fund

## **\$1,000 TO \$4,999**

Donald P. and Byrd M. Kelly Foundation  
William Blair & Company Foundation Roy  
and Diane Landgren Family Foundation  
Rotary Club of Chicago Lakeview  
Foundation  
Rotary Club of Wilmette Foundation  
GE Foundation  
ABRA Prentice Foundation  
The Donaldson Family  
David Bohl  
Jeffery and Ruth Kaufman  
Paul Camp  
Li Jiang

## **\$500 TO \$999**

Wilmette Harbor Rotary Foundation  
Township High School District  
Vanguard Charitable  
Roirdan Burnett and Lois Wecker  
The Libby Family  
James and Stephanie Anderson

## **\$100 TO \$499**

Kristyna M. Driehaus Foundation  
Marakon Consulting  
The Bednarz/McMahon Family Fund  
of the Chicago Community  
Foundation  
Camp Kesem  
Oliver Wyman  
Northwestern Student Holdings  
New Trier Township High School  
Cheesies  
Business Executives Association  
Crossroads Training Company  
Keith and Ann Dronen  
Christopher J. Rutt  
and Cheryl E. Bye  
Steven Liska  
Sharon and Gerald Laderman  
Joyce Culkin  
Robert and Christine McQuinn  
Owen and Joy Duncan  
Peter E. Manis and Susan A.  
Richman  
James and Stephanie Anderson  
Vera, Naomi, and Dan Pless  
Shina Scrap Inc.  
James T Elliot IV

Jenette M. Roberge  
Randi Fiat  
Jon Conrad  
Lane Fenrich  
Henry and Leigh Bienen  
Steven Ozer  
Scott Bronimann  
Robert McPhilly  
Ardath A. Hamann  
Kaufman Hall  
Sheila Cahnman  
Cindy Wang  
Ross and Lori Laser  
Bettina Chang  
Chad Malek  
Angela Lee  
Li-Chia Chang  
Verinder Syal  
Kristen Goss  
Daniel Murray  
Carla Lipe  
Christopher Rutt and Cheryl Bye  
Barbara Hoffman  
Michele and Jeffrey Title



**Supplies for Dreams, Inc.**  
**Consolidated Statement of Activities Fiscal Years Ended Dec 31**  
**Public Support And Revenue**

Public Support And Revenue	<b>2013</b>	<b>2012</b>
Public Support		
Individuals	\$ 11,482	\$ 13,192
Corporations, Foundations and Other Organizations	58,114	25,820
Special Event Revenue	11,905	10,540
Securities	4,010	–
Gifts In-Kind	5,749	33,729
Interest and Other Income	106	24
<b>Total Public Support and Revenue</b>	<b>91,367</b>	<b>83,305</b>
<b>Expenditures and Expenses</b>		
Charitable Expenditures and Development		
Programming	46,586	34,636
Fundraising	9,502	8,872
Promotions	–	30,000
General & Administrative Expenses	4,734	7,170
<b>Total Expenditures and Expenses</b>	<b>60,822</b>	<b>80,678</b>
Change in Net Assets	30,544	2,627
Net Assets At Beginning of Year	22,571	19,944
<b>Net Assets at End of Year</b>	<b>29,861</b>	<b>14,444</b>
Assets at Supplies for Dreams Northwestern	13,354	6,475

## Management Discussion and Analysis

2013 was a significant year financially for SFD. Total revenue rose by 10%, mainly driven by a 125% increase in corporate donations. Taking into account only support from corporations and foundations, individuals, and special events, revenue grew by 61% in 2013. In addition, special events revenue increased by 13% driven by the successes at our Gala. SFD made significant investments in our partner schools. SFD's programming

expenses increased by 35% as SFD provided more field trips and basic resources to our students. Fundraising expenses only increased by seven percent in 2013, which signifies improved fundraising efficiency compared to the prior fiscal year. General and administrative expenses decreased by 34%, a decrease that can be attributed to our cost-containment strategy, and the general and administrative expenses comprised only 5% of revenue. In 2014, the management

team will continue streamlining operations to provide more programming while decreasing non-programming expenses as a percentage of revenue. Net assets increased by 135% and SFD ended the year with net assets of \$53,116. In addition, \$13,354 resides in accounts at Supplies for Dreams Northwestern University. In 2014, funds will be allocated to improve the quality of existing programs and add new partner schools.



Photography: Spenser Gabin, Elyse Samuels, Justin Barb...